



TESTING FLOWCHARTS FOR SCHOOLS & CHILDCARE CENTERS

Updated December 6, 2021

Contents

PCR test performed on a suspected COVID-19 case	2
Antigen test performed on a suspected COVID-19 case	2
Other molecular test (NAAT, Cue COVID-19 Test) performed on a suspected COVID-19 case.....	2
PCR test performed on a close contact to a COVID-19 case	2
Antigen test performed on a close contact to a COVID-19 case	2
Other molecular test (NAAT, Cue COVID-19 Test) performed on a close contact to a COVID-19 case	2

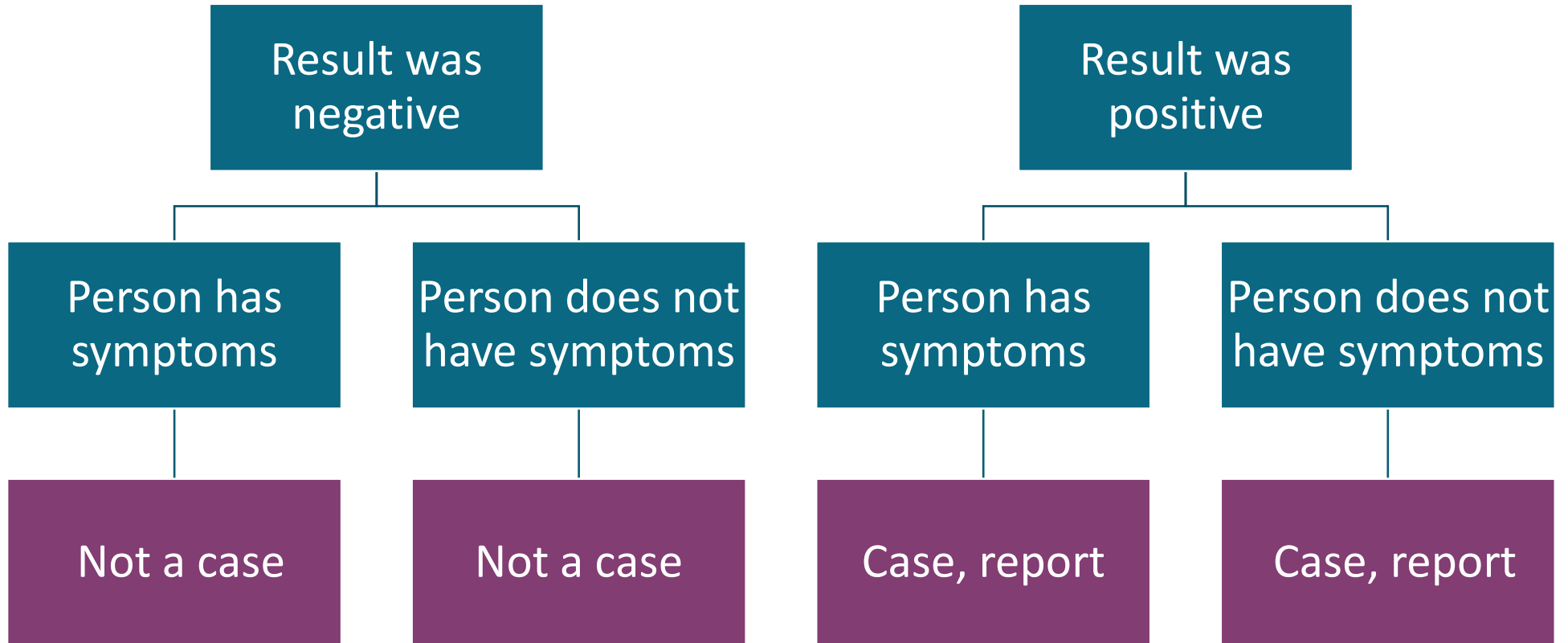
Resources

[COVID-19: When a Student or Faculty/Staff Member Can Return to School \(Exclusion Table\)](#)

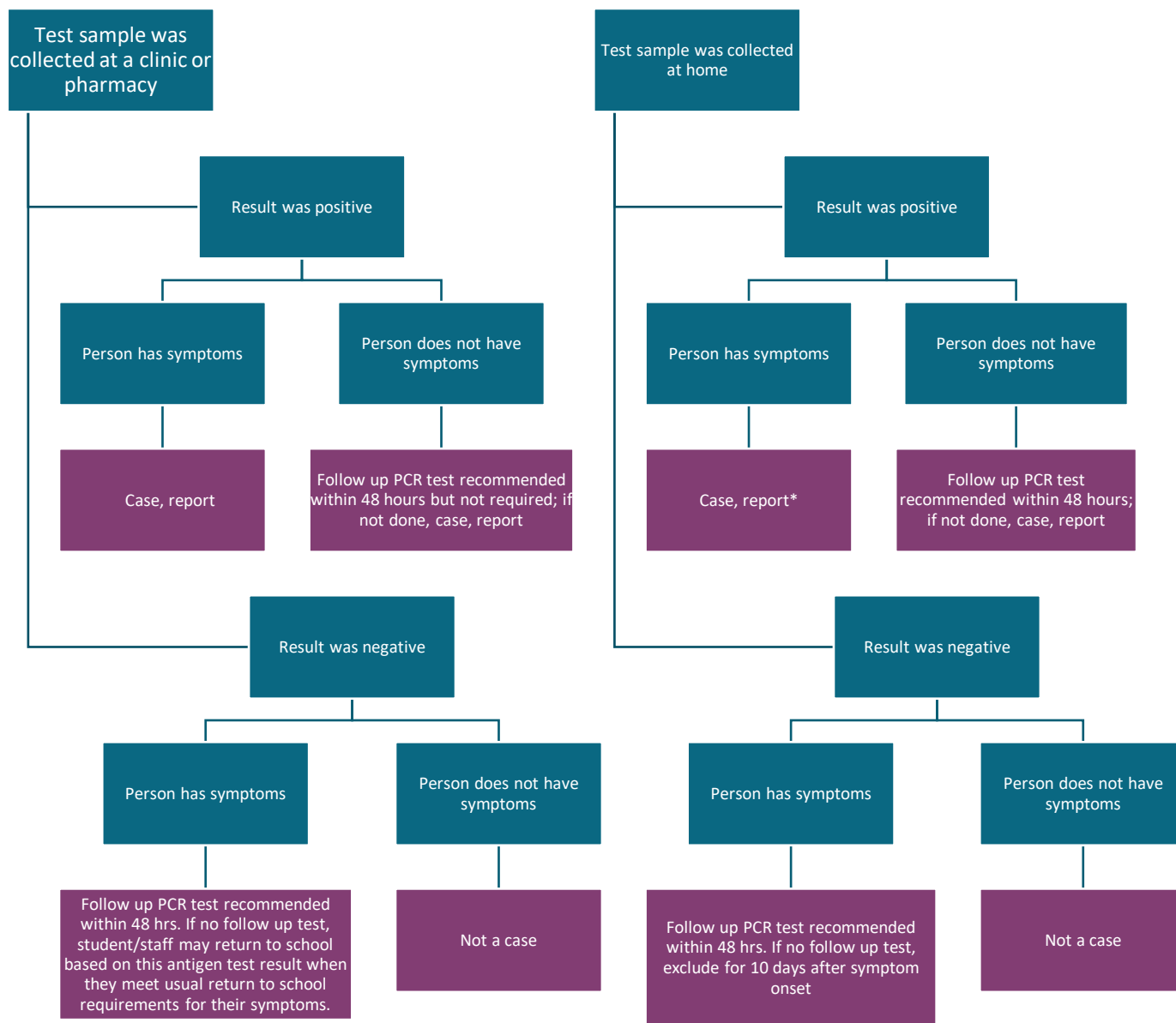
[Action Plan for a COVID-19 Case in a Dane County School](#)

[Wisconsin Department of Health Services Memo BCD 2021-10 Considerations for Confirmatory Testing of COVID-19 Point-of-Care Tests](#)

PCR test performed on a **suspected COVID-19 case**

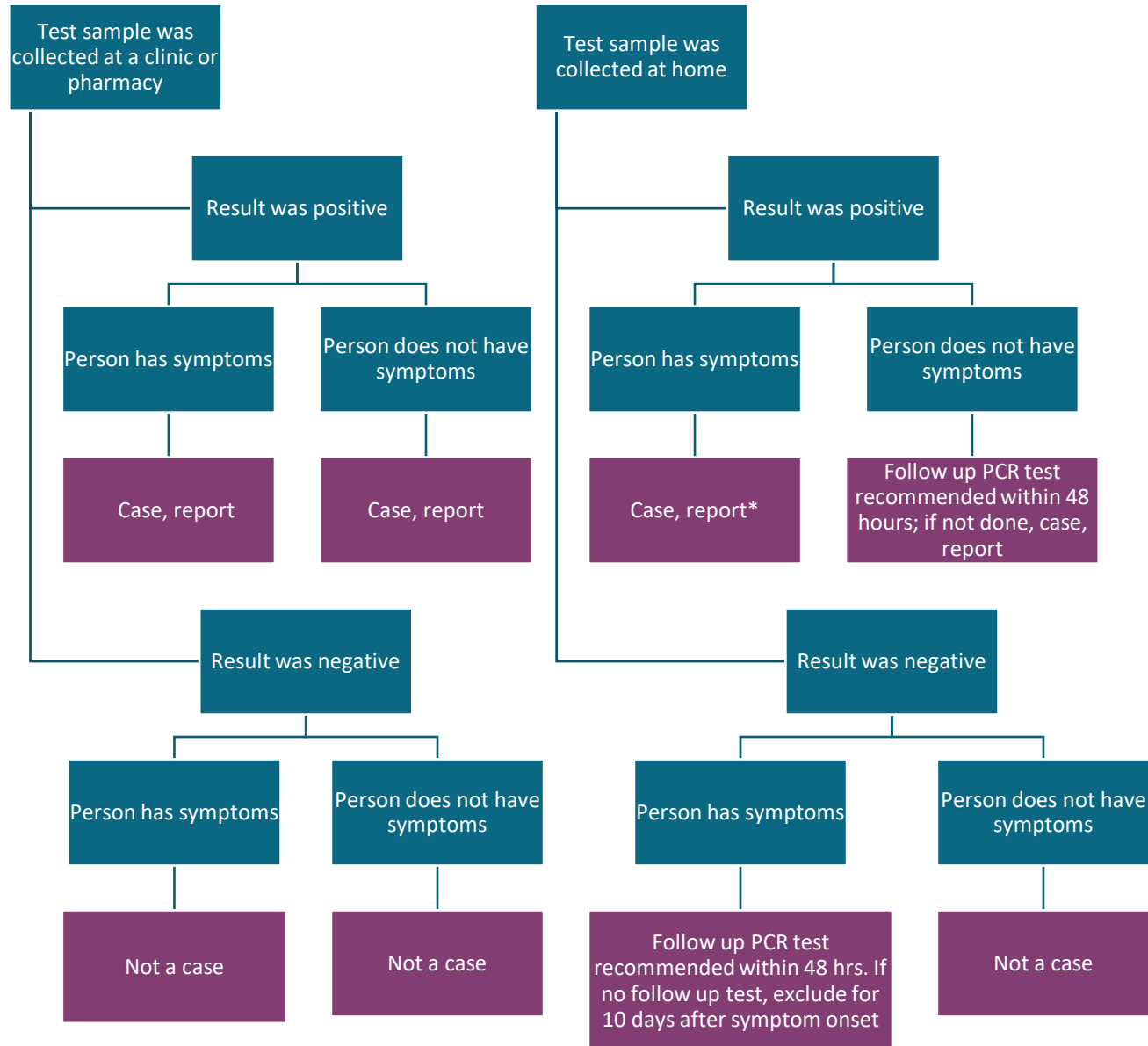


Antigen test performed on a suspected COVID-19 case



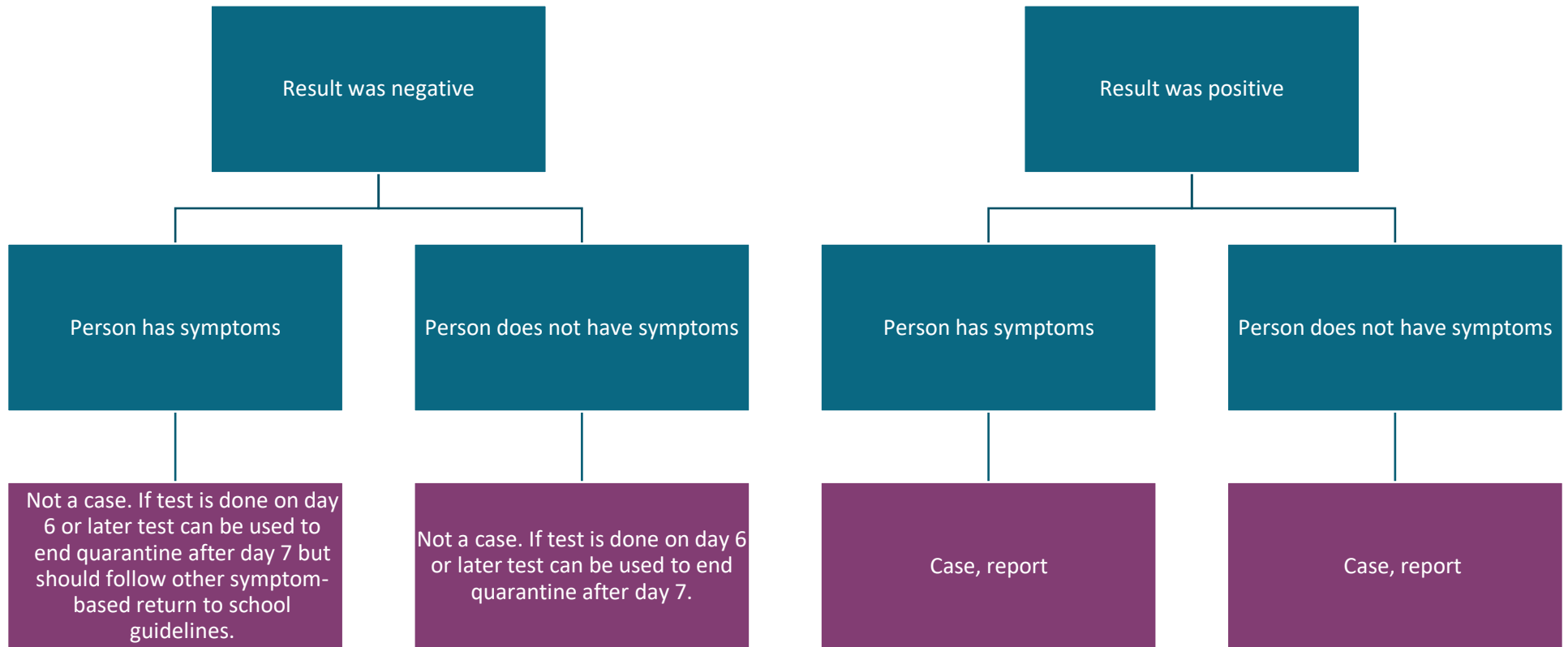
*For all home tests, if a positive test is followed by a negative lab-based, molecular test within 48 hours, the person is considered not a case. Since this is unlikely in a person with symptoms, we recommend beginning contact tracing and exclusion right away in this situation. If you know the person will receive a follow-up test within 48 hours you can wait for that result but risk having close contacts become infectious while still attending school.

Other molecular test (NAAT, Cue COVID-19 Test) performed on a suspected COVID-19 case

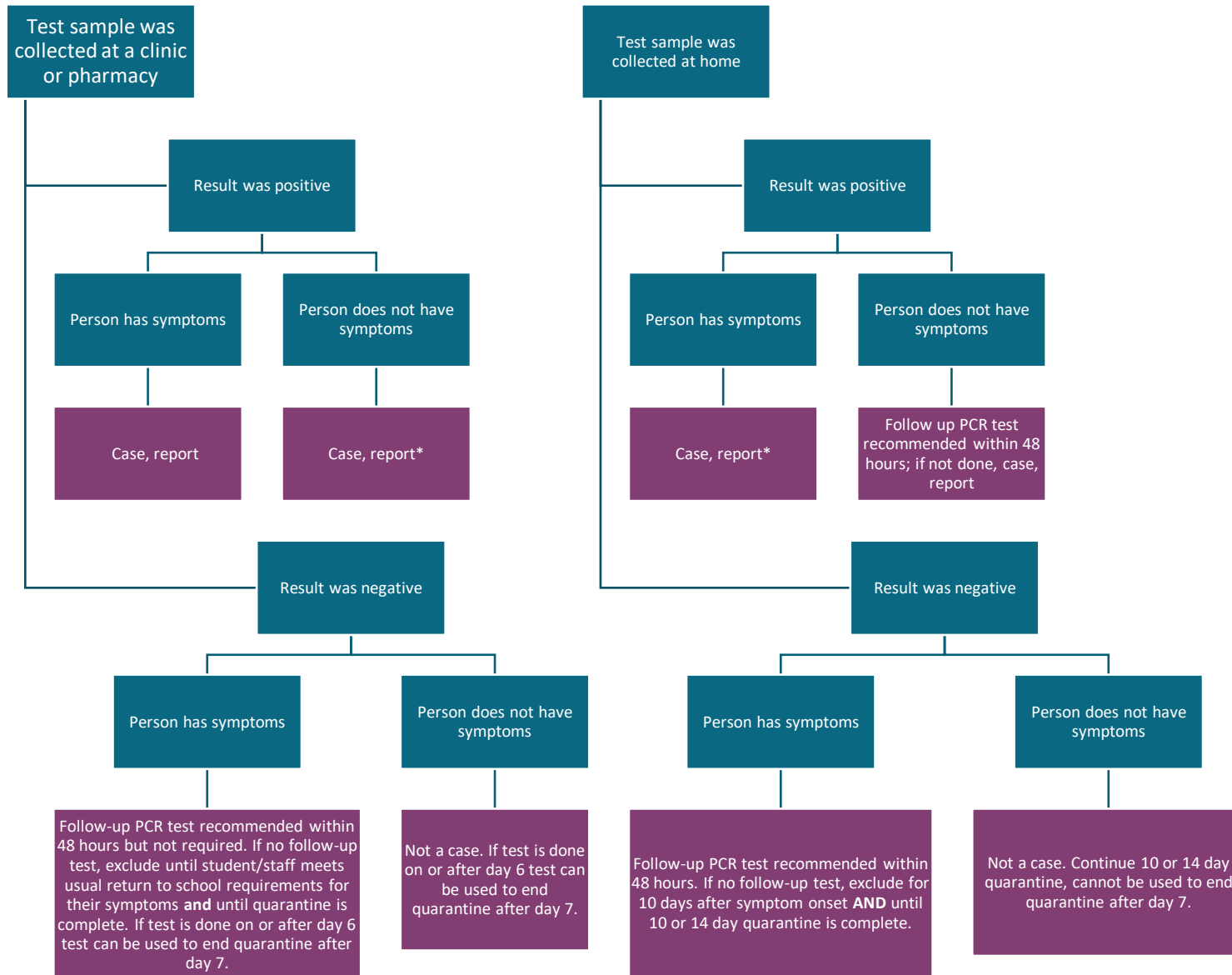


*For all home tests, if a positive test is followed by a negative lab-based, molecular test within 48 hours, the person is considered not a case. Since this is unlikely in a person with symptoms, we recommend beginning contact tracing and exclusion right away in this situation. If you know the person will receive a follow-up test within 48 hours you can wait for that result but risk having close contacts become infectious while still attending school.

PCR test performed on a close contact to a COVID-19 case

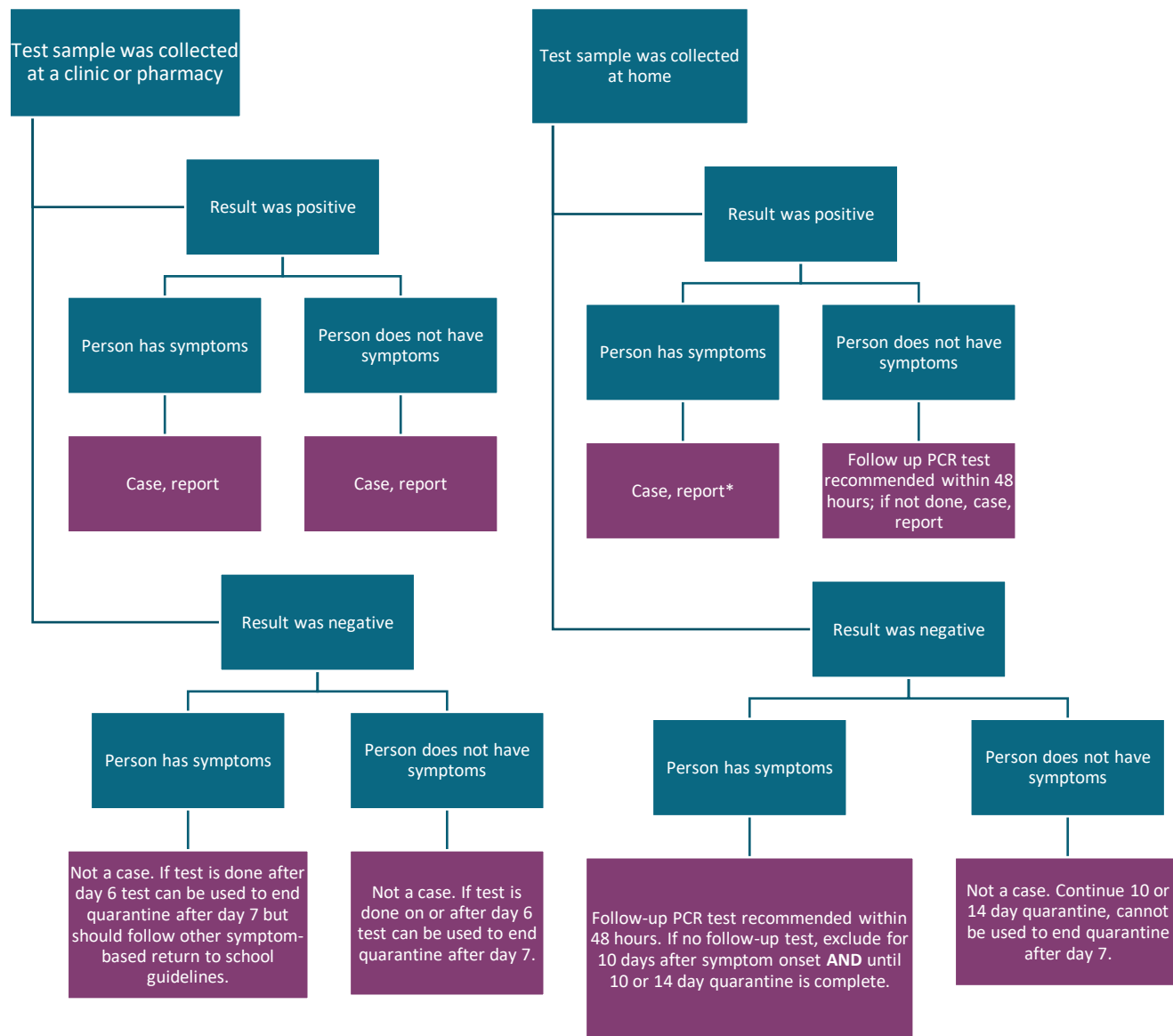


Antigen test performed on a **close contact** to a COVID-19 case



*For all home tests, if a positive test is followed by a negative lab-based, molecular test within 48 hours, the person is considered not a case. Since this is unlikely in a person with symptoms, we recommend beginning contact tracing and exclusion right away in this situation. If you know the person will receive a follow-up test within 48 hours you can wait for that result but risk having close contacts become infectious while still attending school.

Other molecular test (NAAT, Cue COVID-19 Test) performed on a **close contact** to a COVID-19 case



*For all home tests, if a positive test is followed by a negative lab-based, molecular test within 48 hours, the person is considered not a case. Since this is unlikely in a person with symptoms, we recommend beginning contact tracing and exclusion right away in this situation. If you know the person will receive a follow-up test within 48 hours you can wait for that result but risk having close contacts become infectious while still attending school.